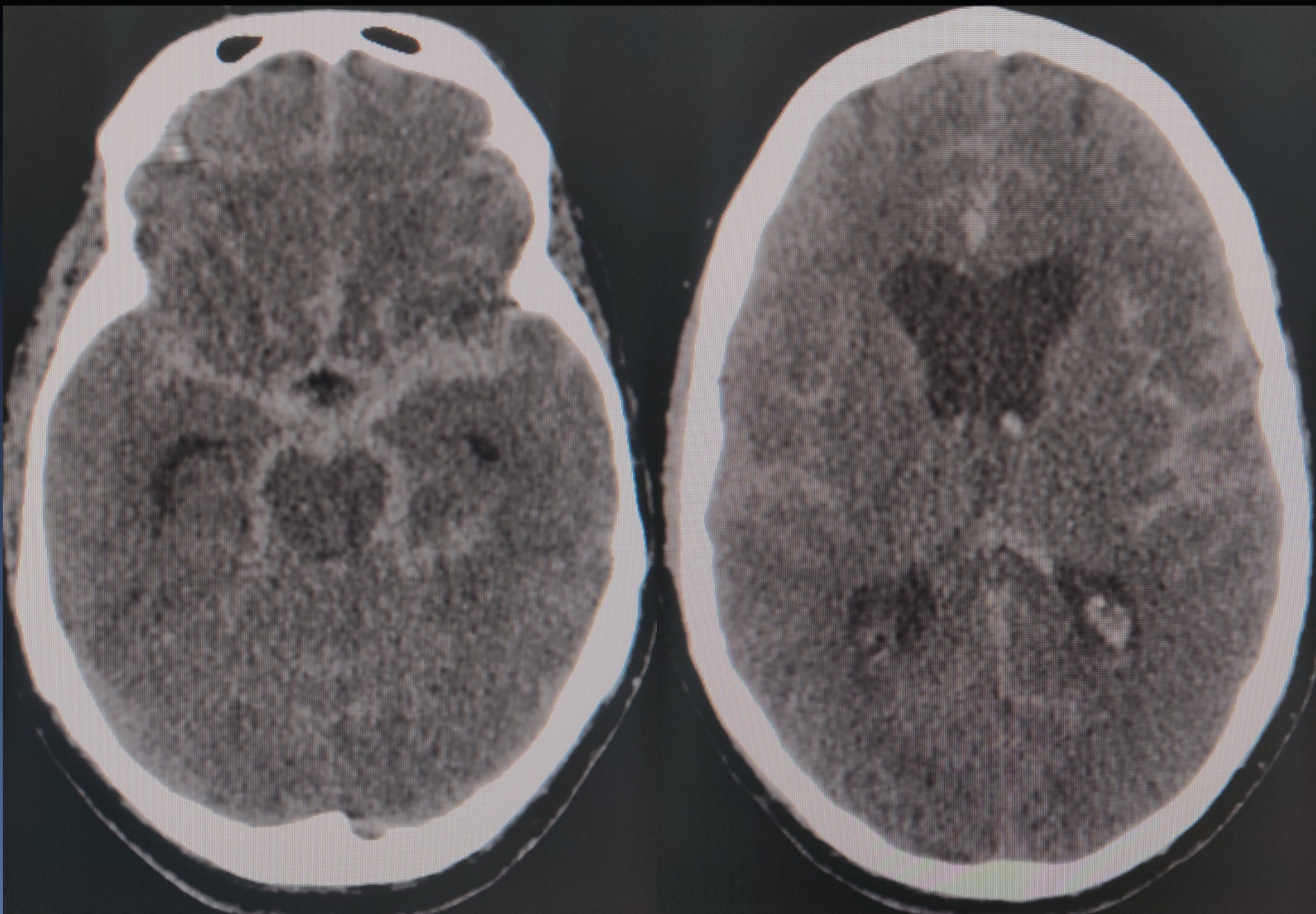


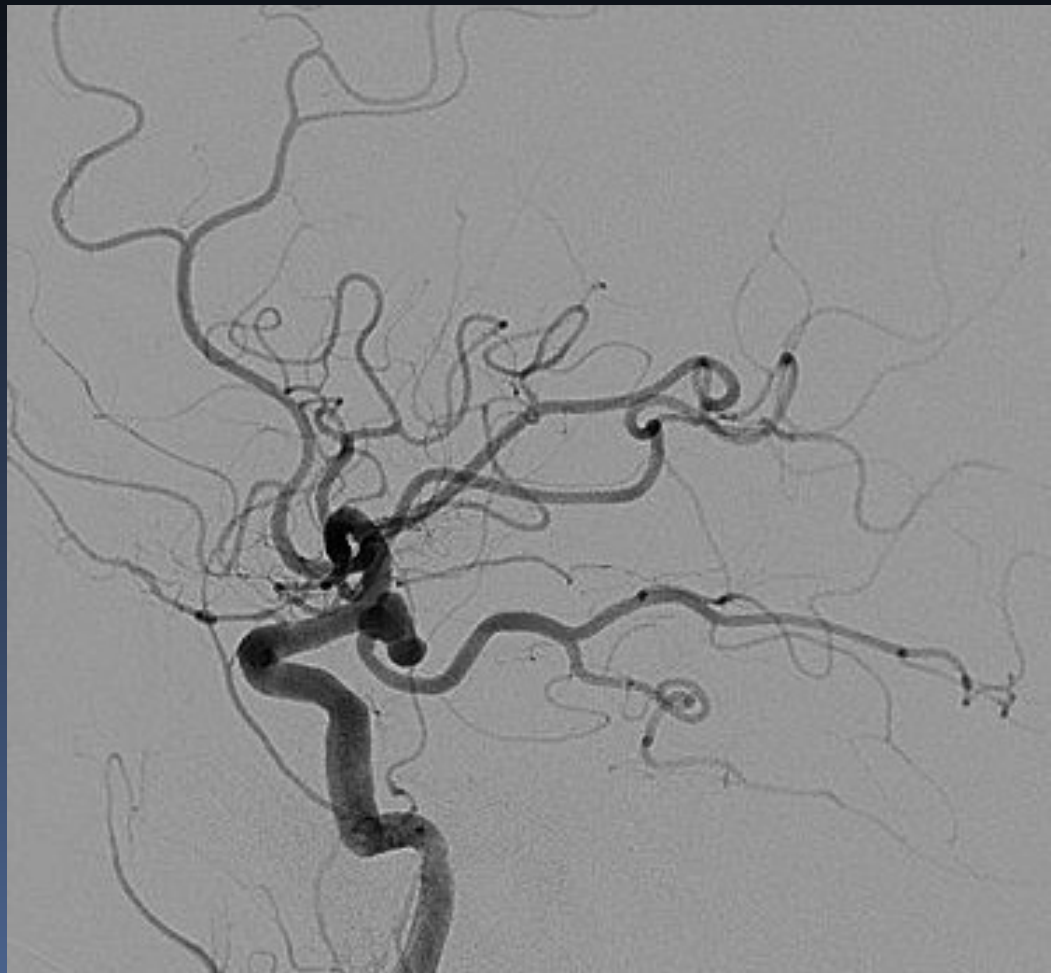
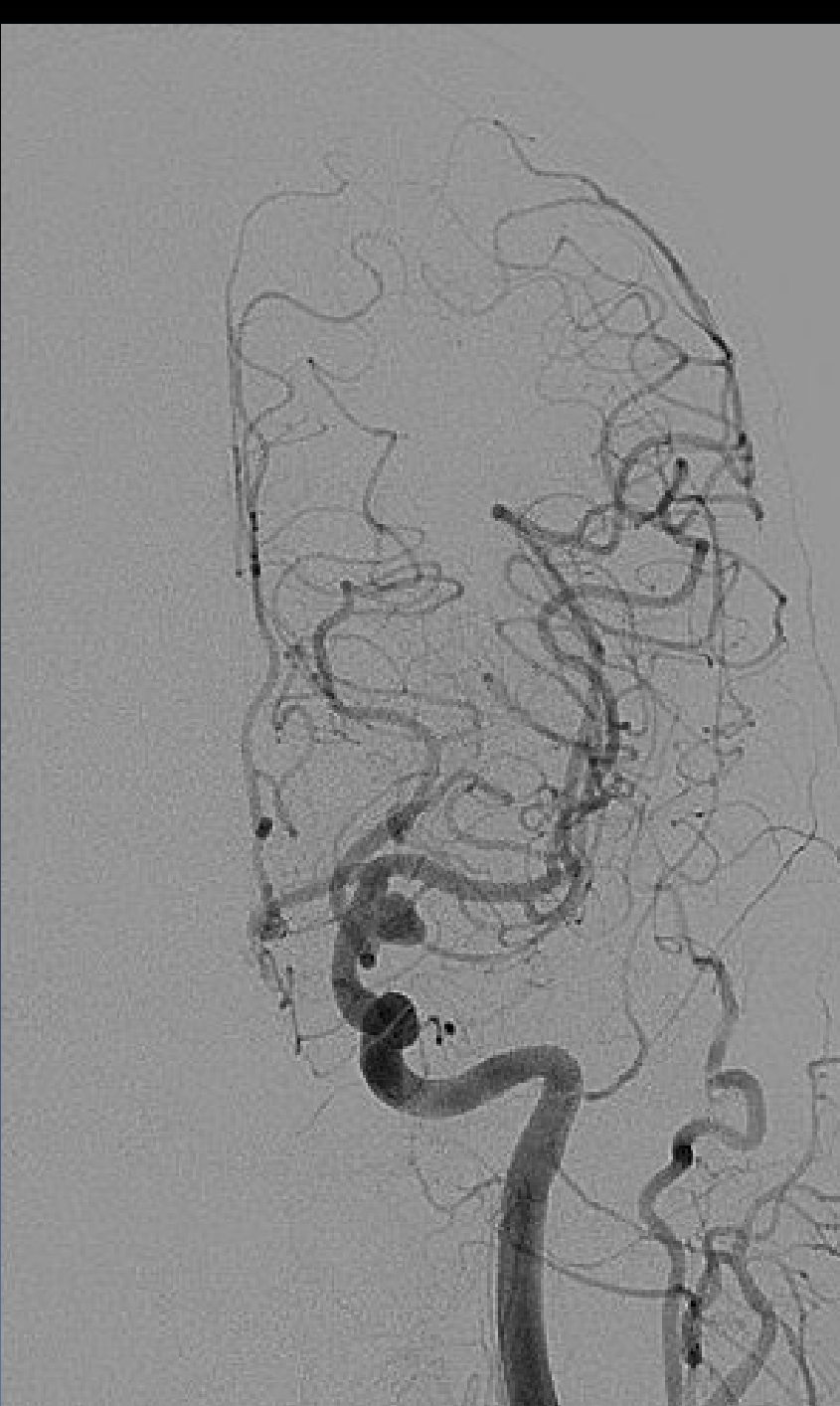
INTERVENTIONAL RADIOLOGY

Dr. Sambhaji Pawal
Interventional Radiologist
Dr. D. Y. Patil Medical College,
Hospital & Research Centre

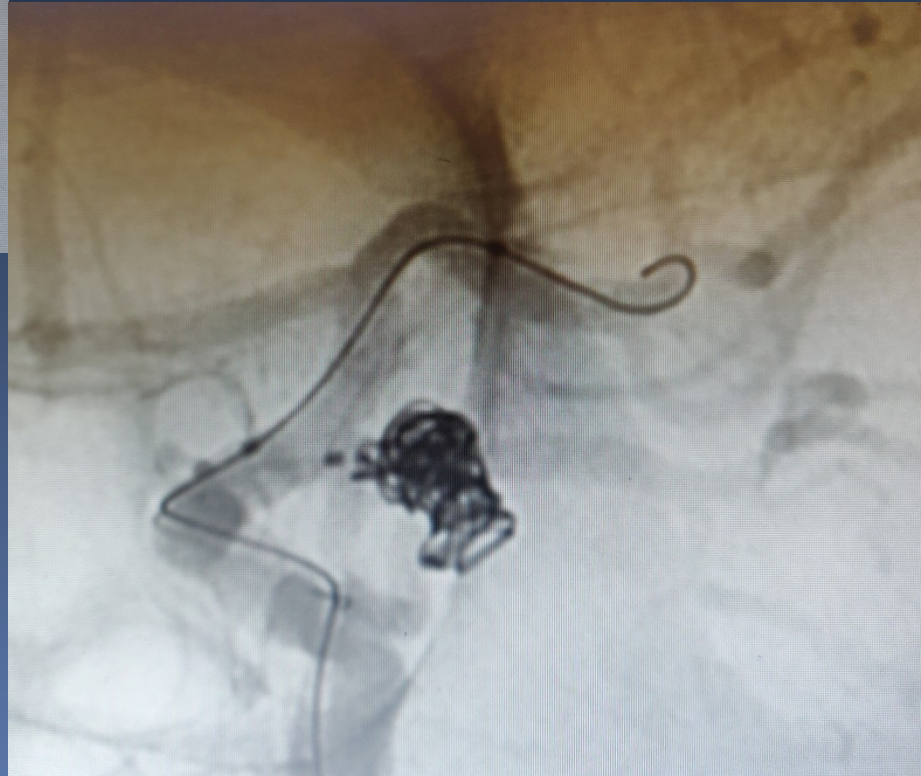
CASE-1

- 72yr , Man
- Sudden onset headache, giddiness & LOC
- GCS- 7/15
- CT Brain: Grade III SAH

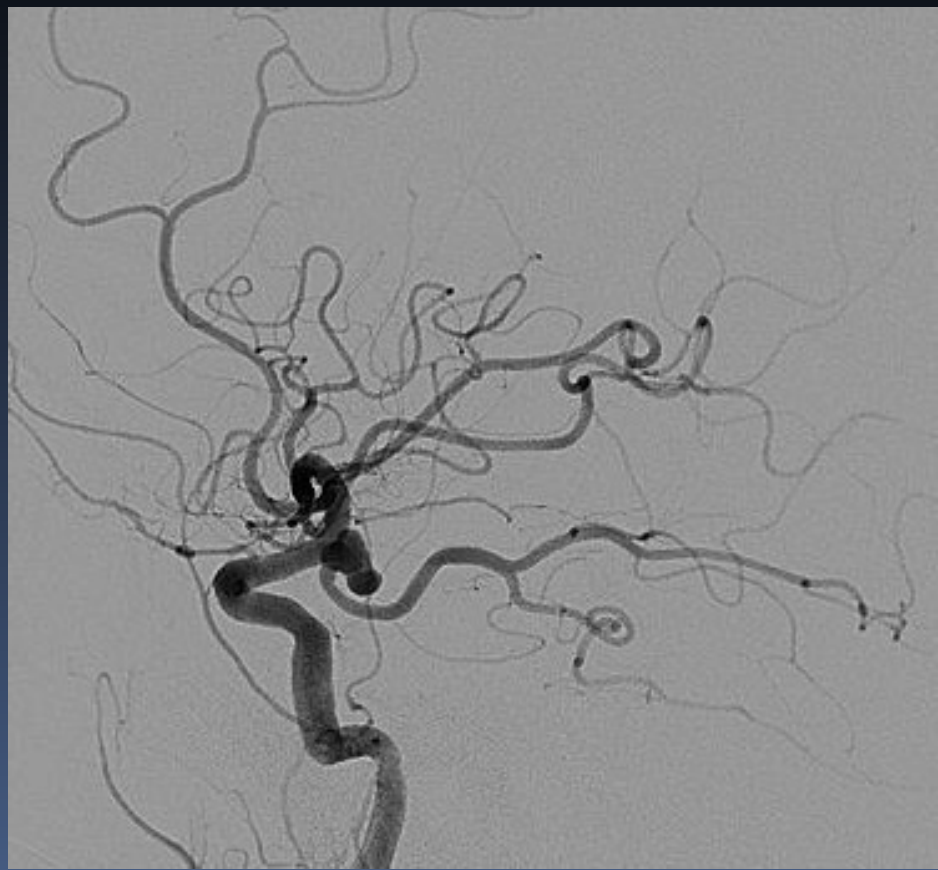


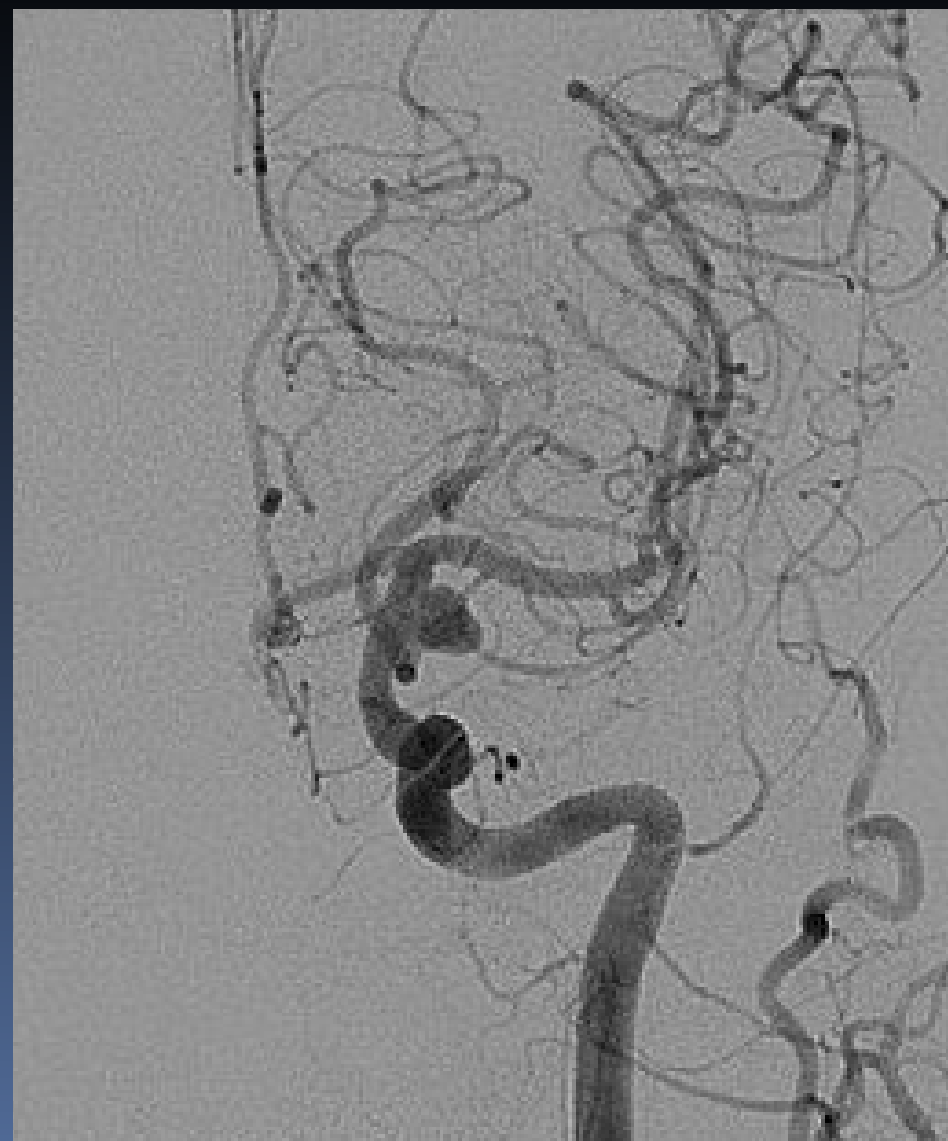
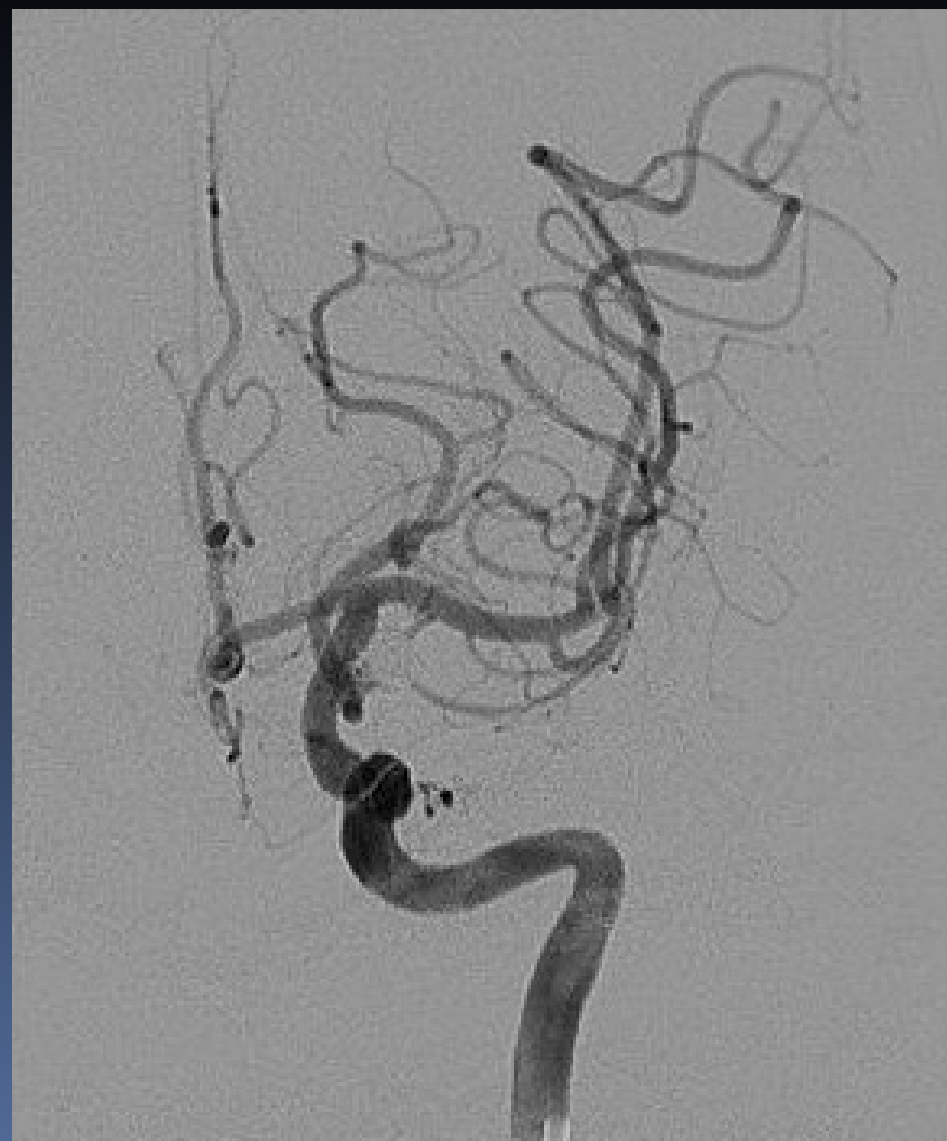


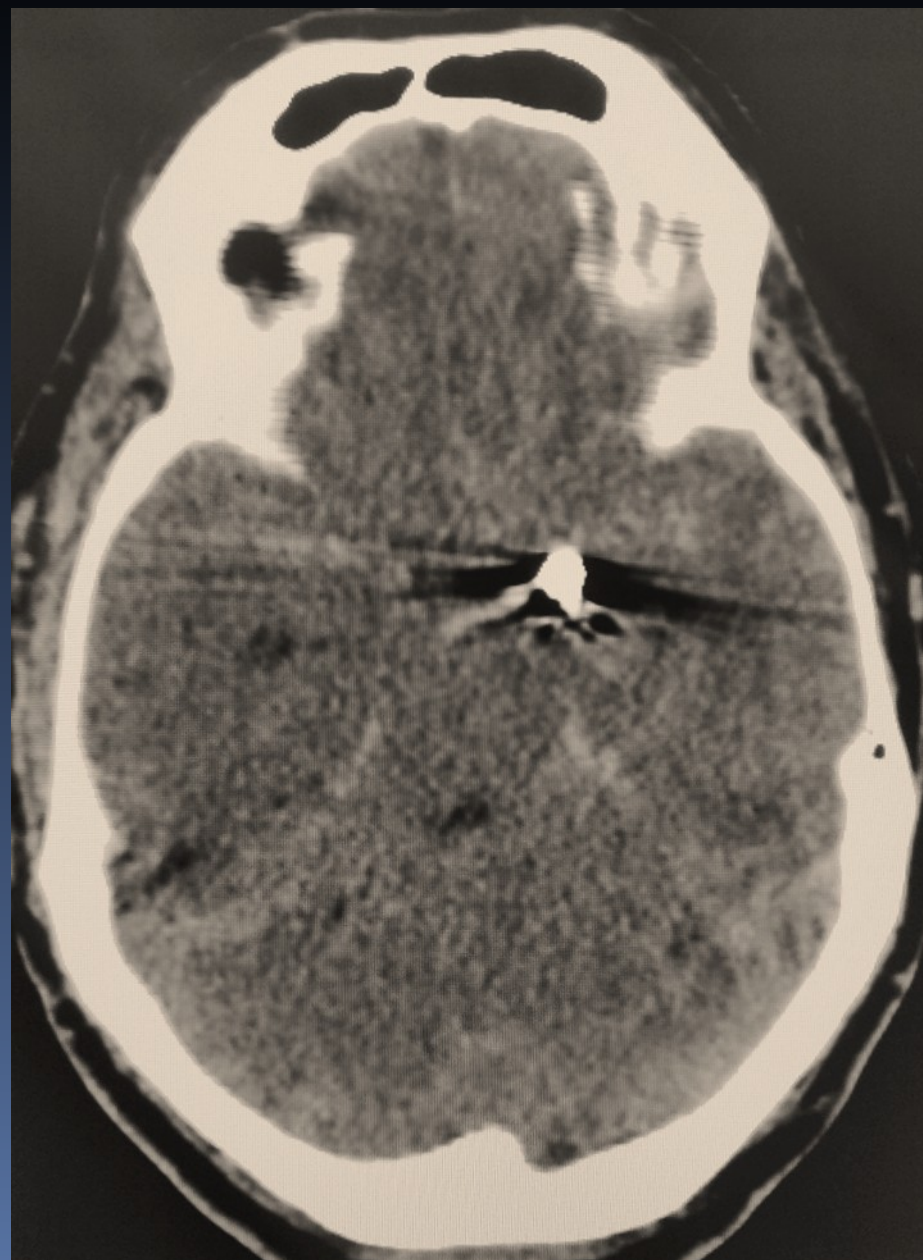
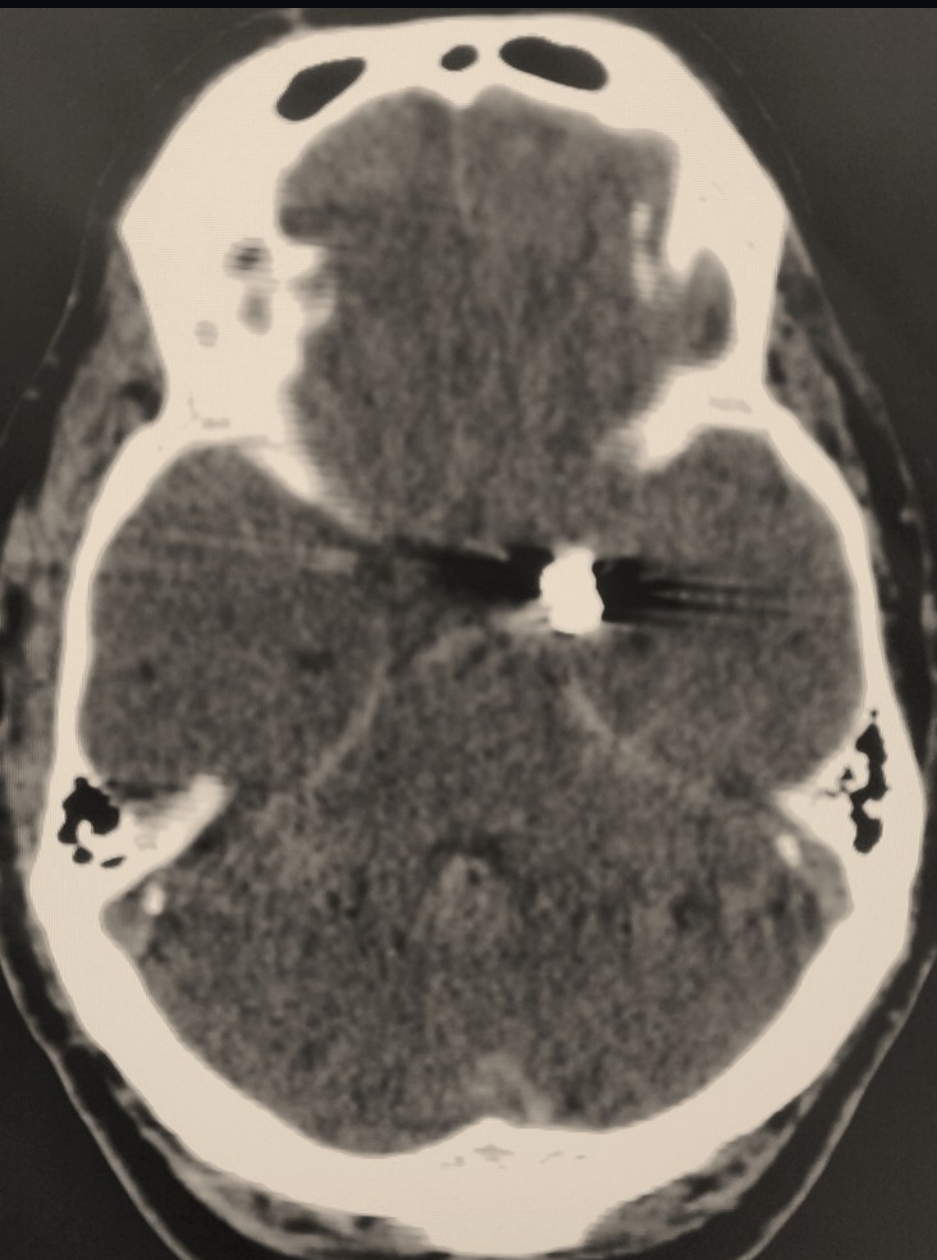






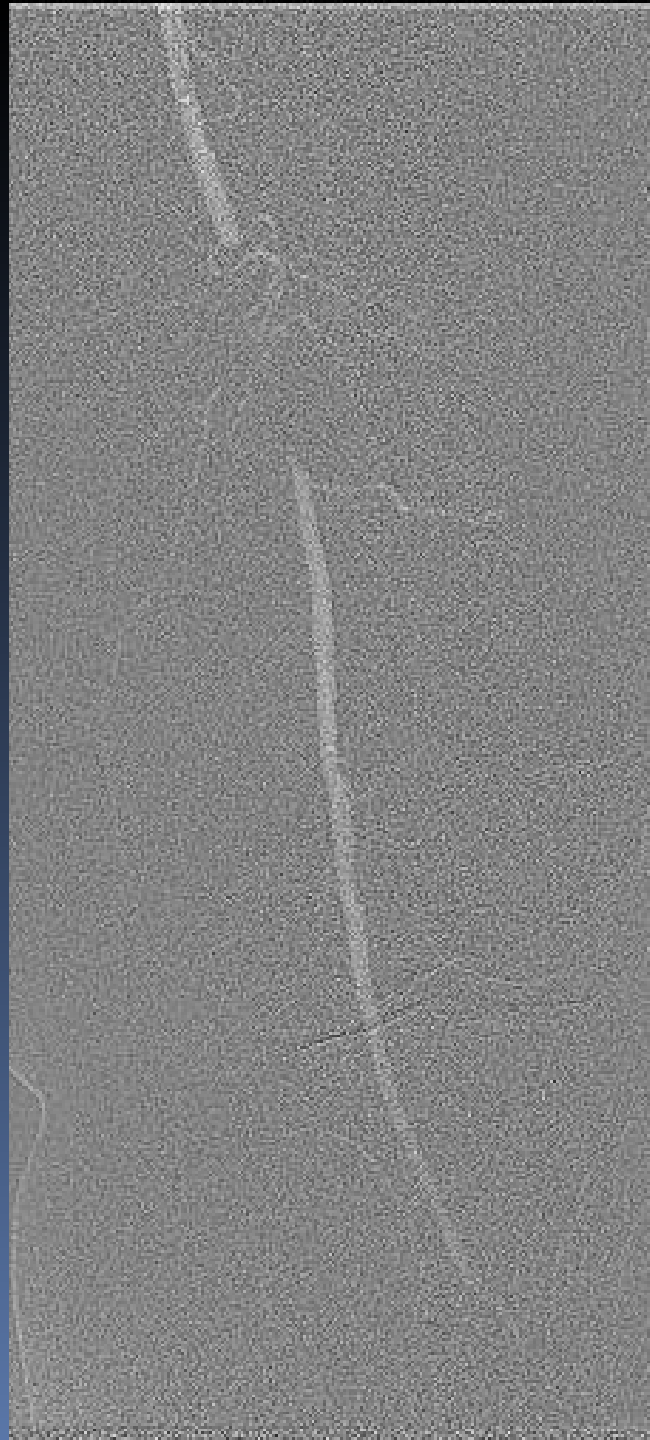


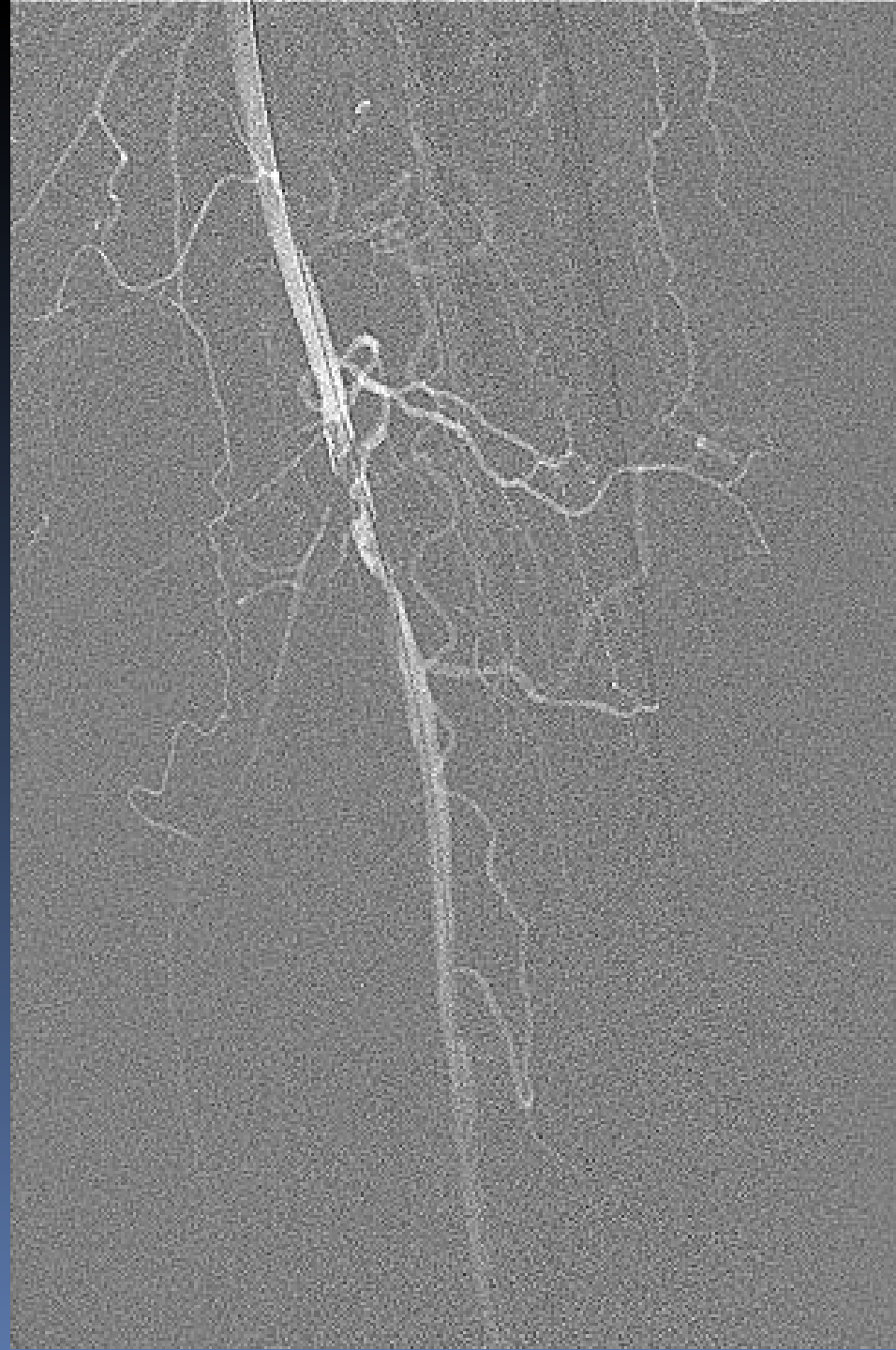


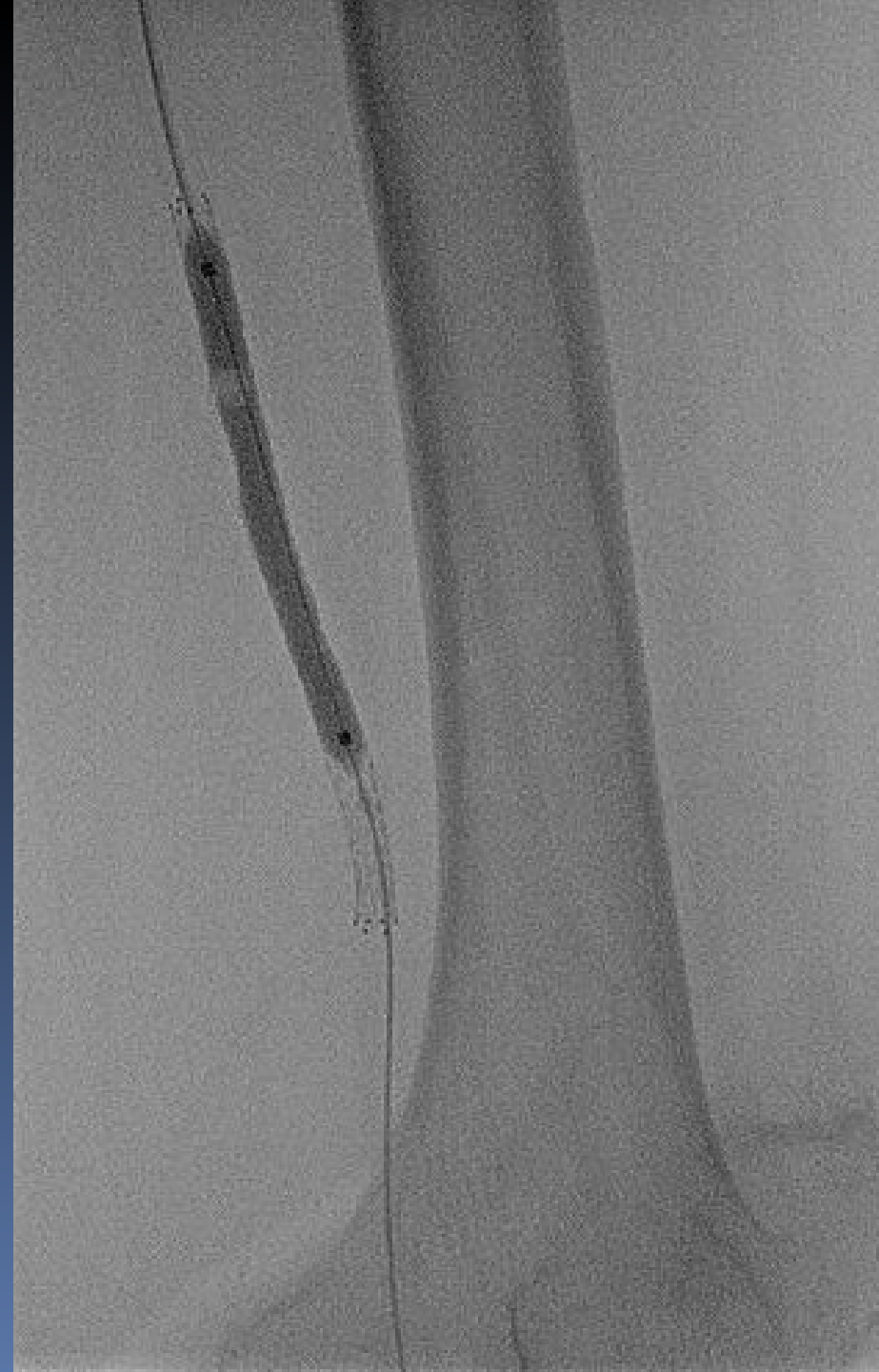


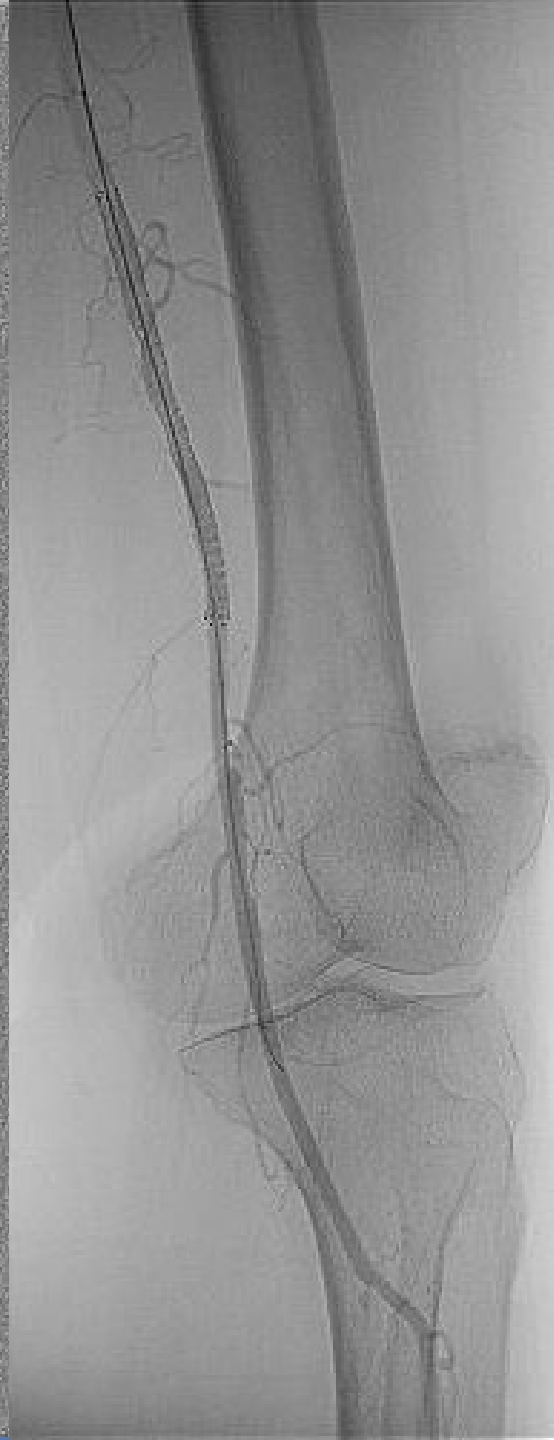
CASE-2

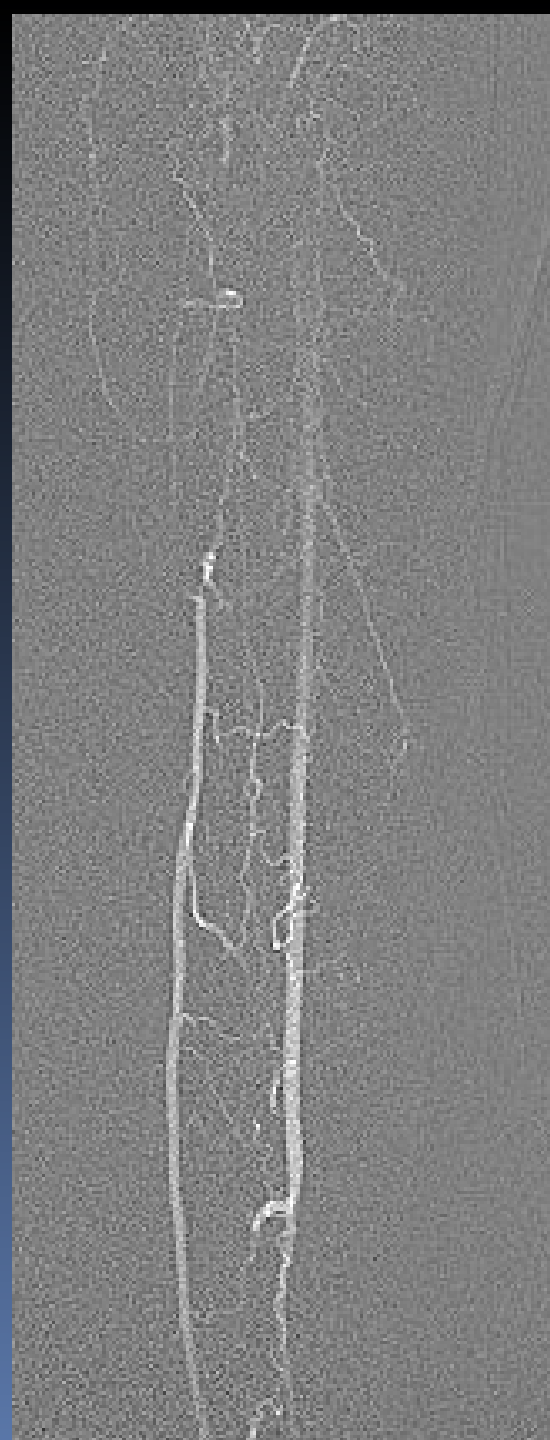
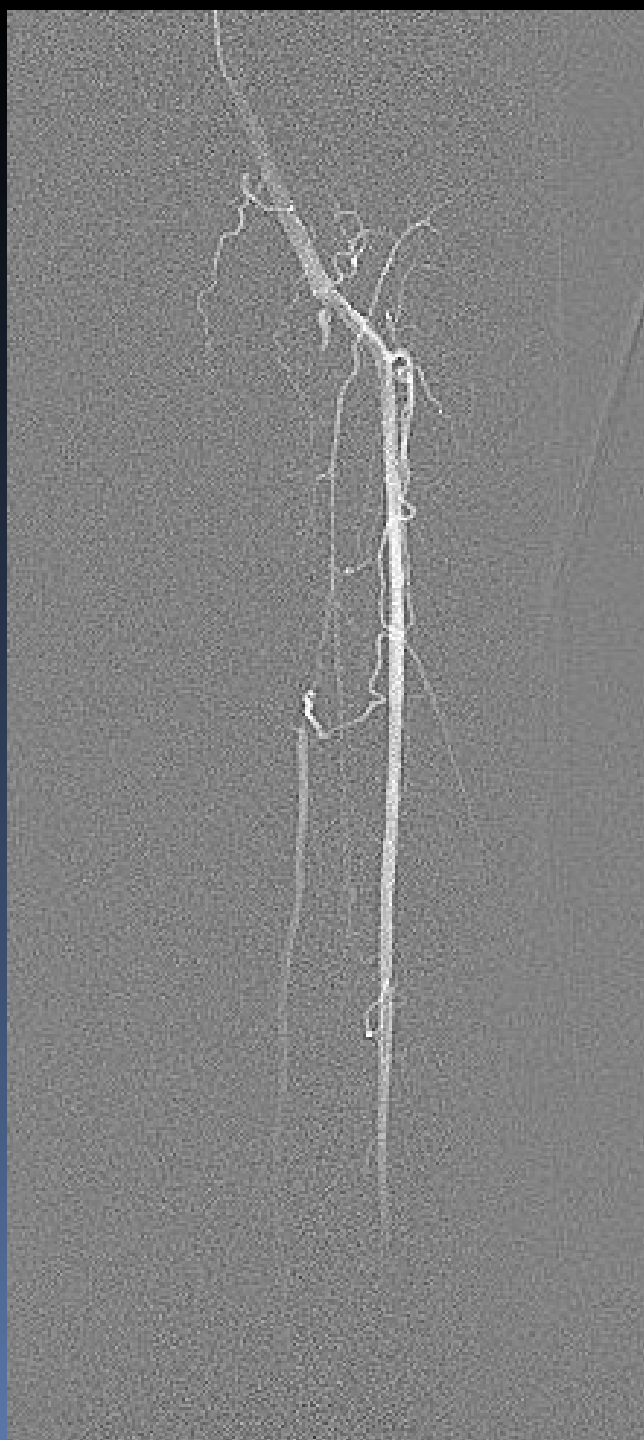
- 60yr , Lady K/c/o DM with AKI
- Left 4th & 5th toe gangrene and rest pain
- Doppler & MRA s/o SFA & PTA occlusion
- ABI : 0.4
- Sr. Creatine 2.9

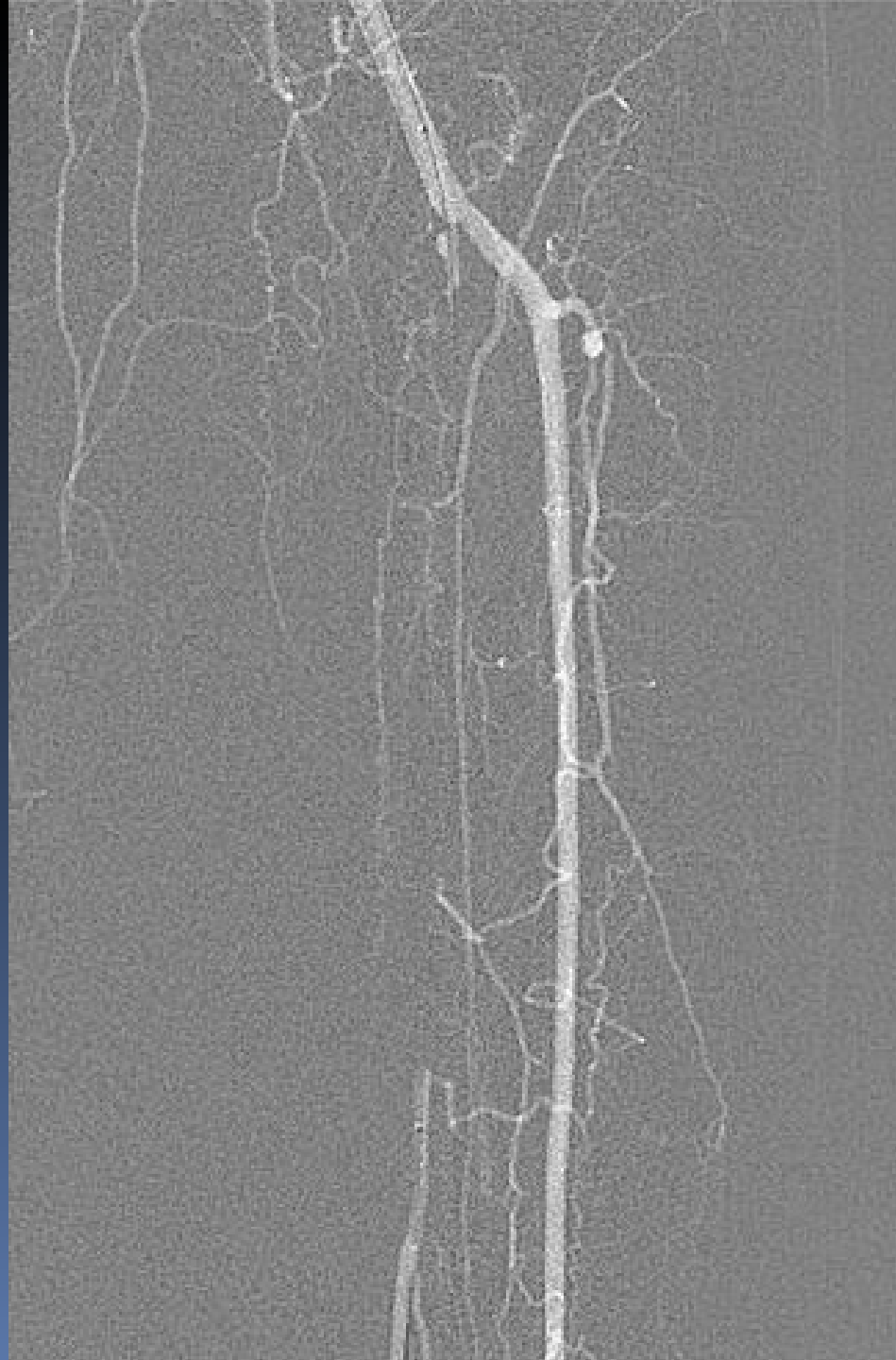


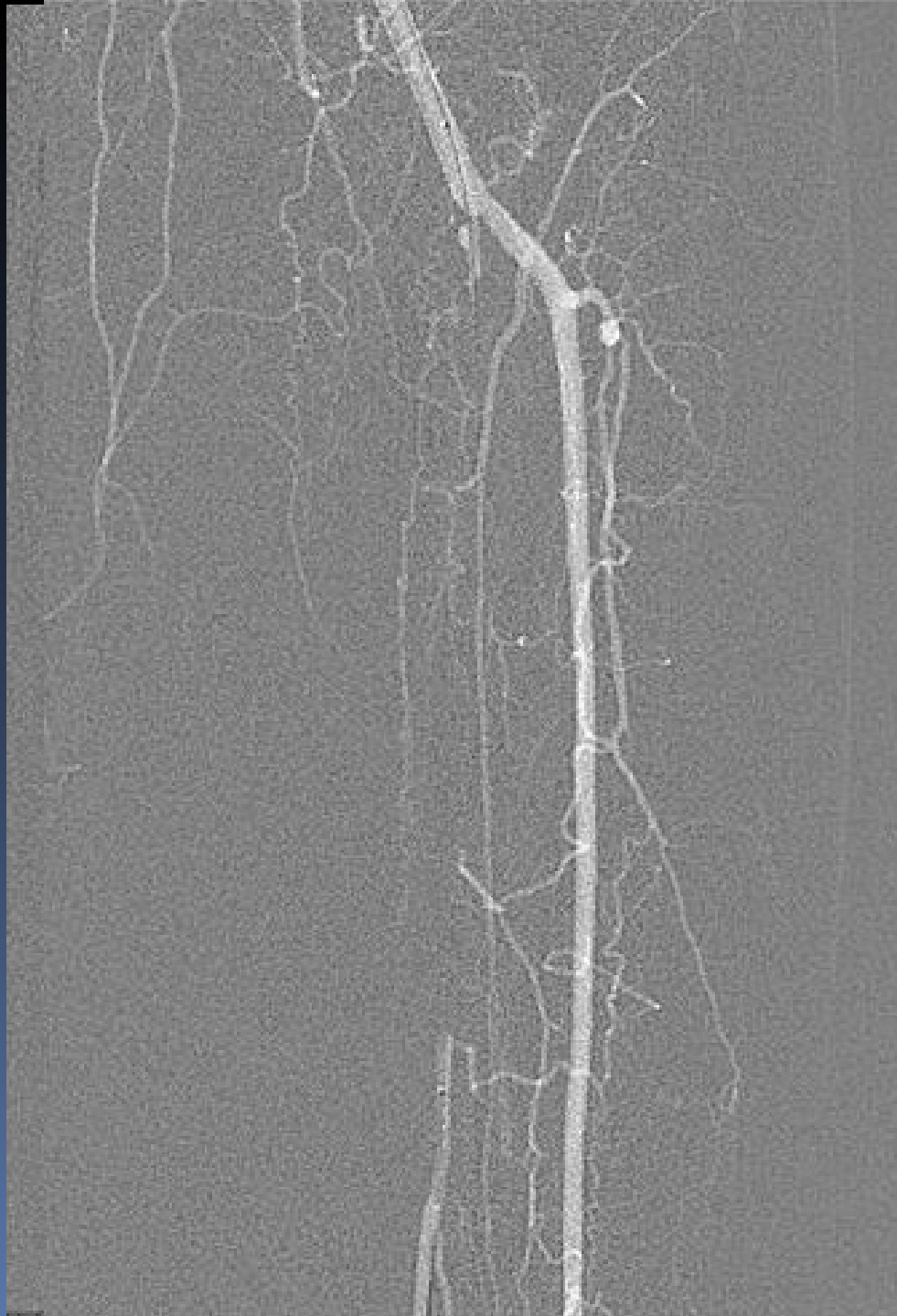












C02 Angiography

- Deranged Renal functions
- Contrast allergy
- Infra-diaphragmatic vessels
- Not recommended in coronaries and brain vessels

**Targeted cancer
treatment (TACE)**

Acute Stroke

Aortic aneurysms

**Biliary Stenting
PTBD
TIPS**

Lower Limb Angioplasty

**Brain Aneurysms &
AVMS**

**Interventional Radiology
Here are just a few
we treat many conditions ...**

**Dialysis
Access & AVF
Salvage**

Varicose veins

**Fibroids &
PPH**

Internal Bleeding

RFA Ablation

**Thrombolysis
Arterial & Venous**

**Vascular
malformations**



INTERVENTIONAL RADIOLOGY COURSES OFFERED :

DM, Interventional Radiology
Fellowship in Interventional Radiology

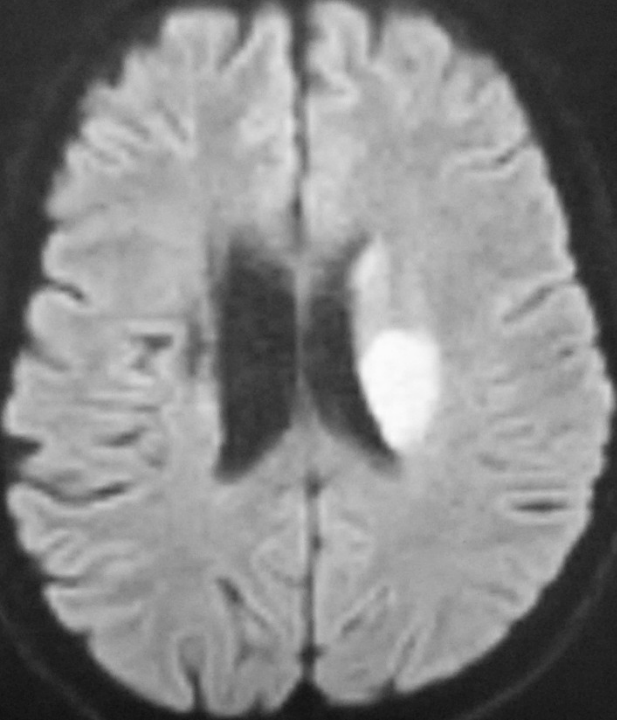


CASE-3

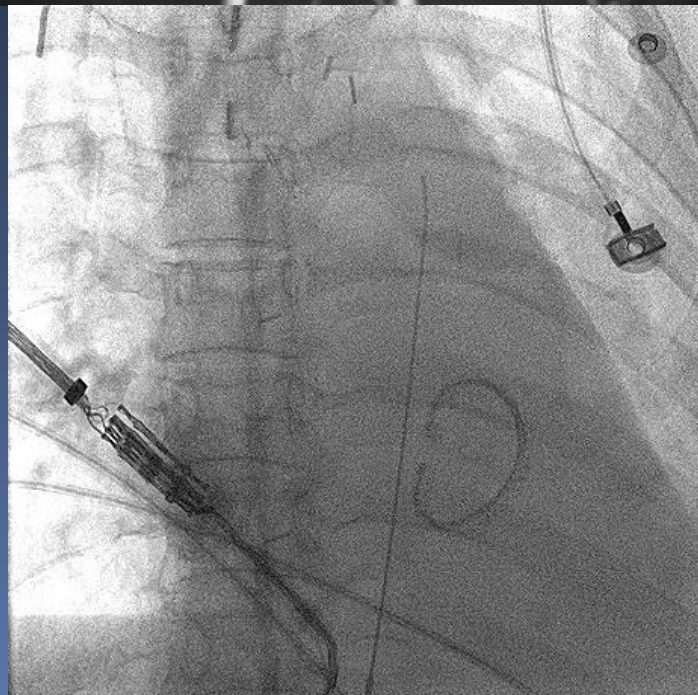
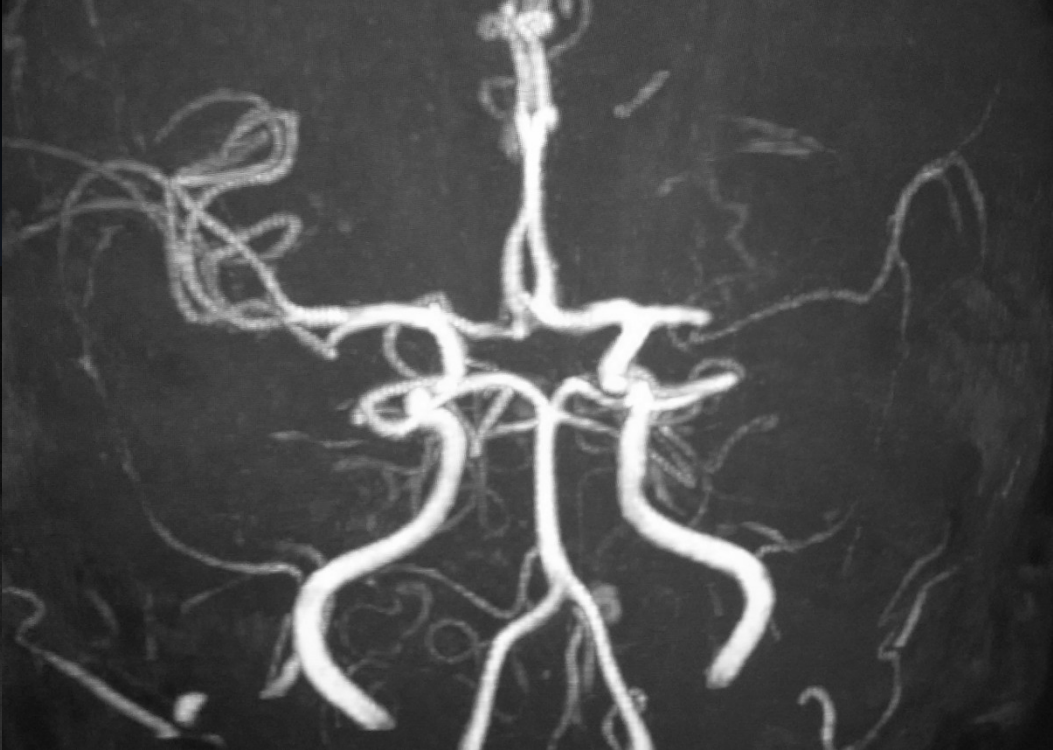
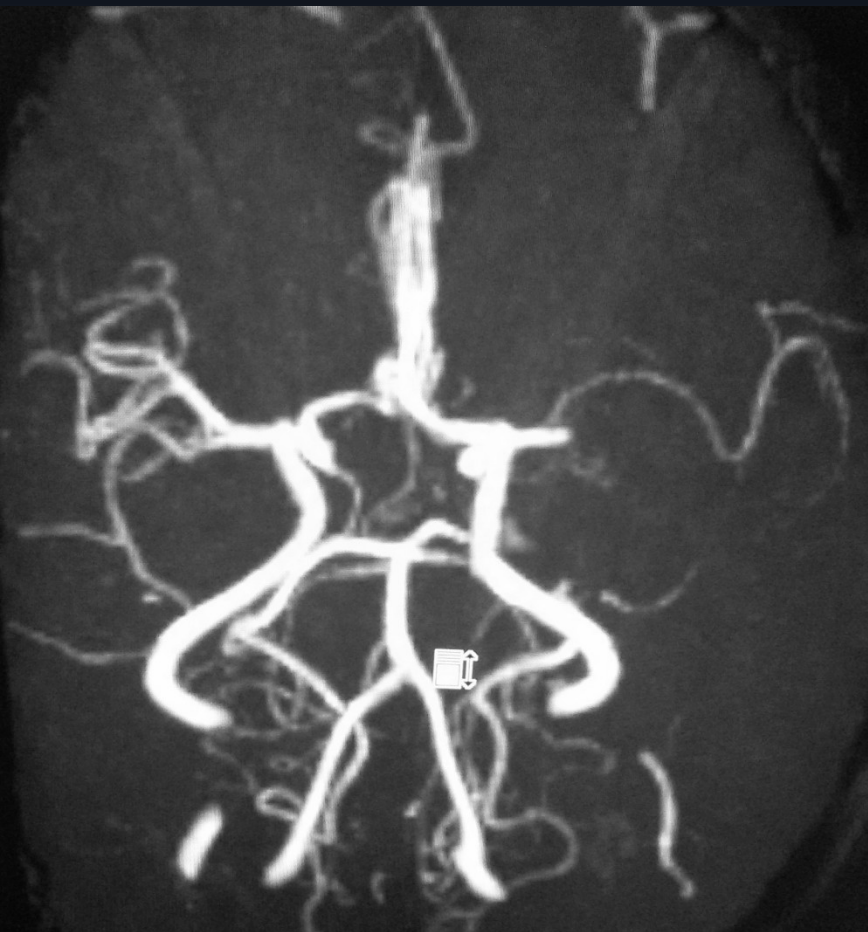
- 45yr , Lady
- Post mitral valve repair, on warfarin (INR- 1.2)
- Sudden onset right sided weakness and inability to speak since 10am
- O/E: Drowsy not obeying commands
- Right hemiplegia (UL & LL-0/5), Global aphasia and left gaze preference
- NIH Stroke Scale- 23/42

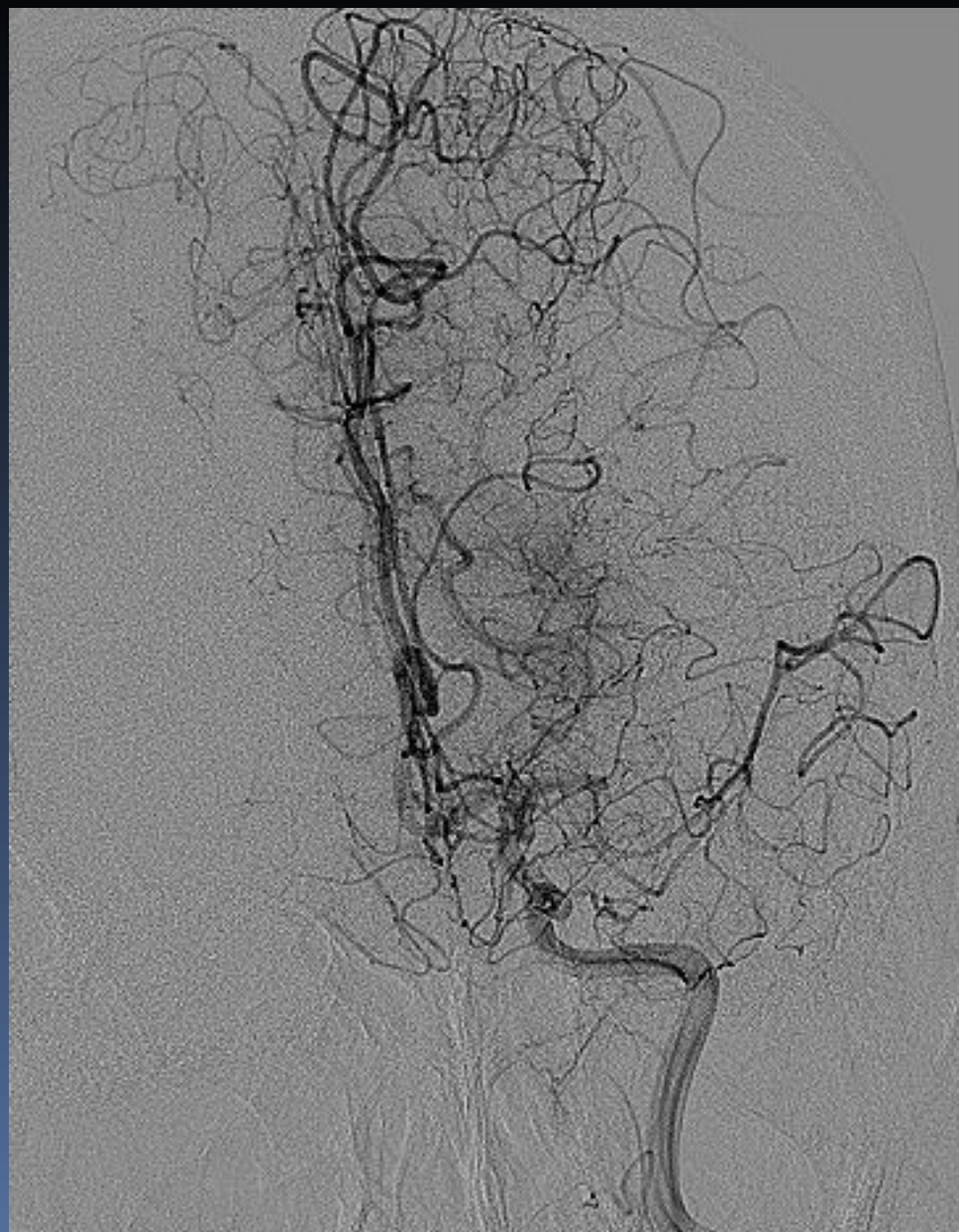
NCCT - 11:30 am

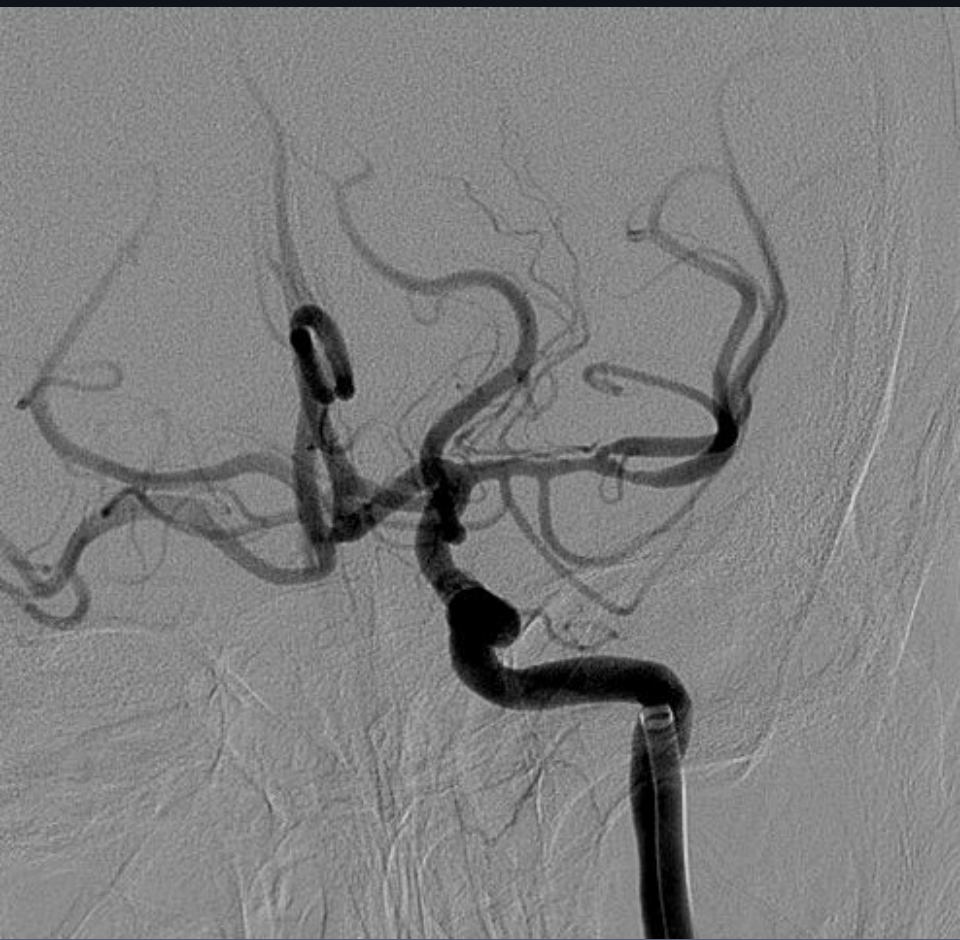
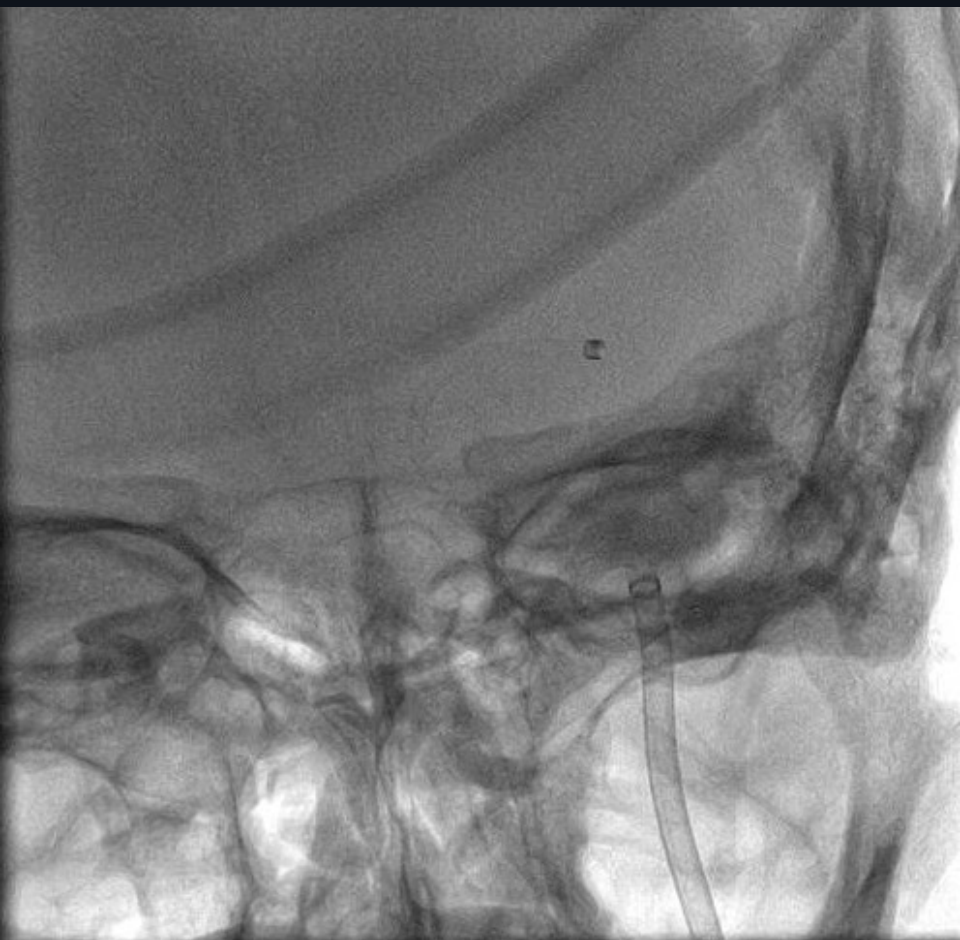


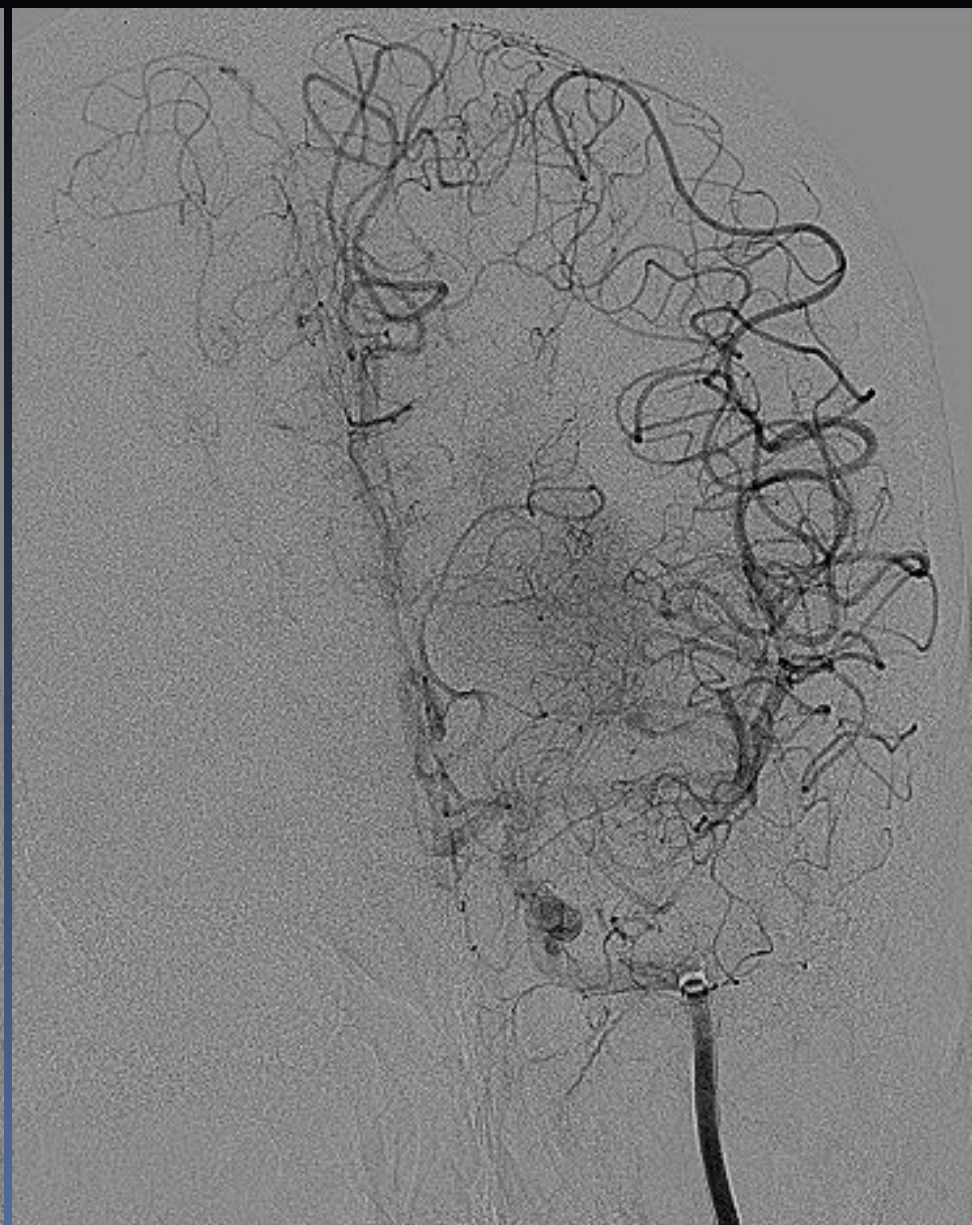


MR - 4:00 pm



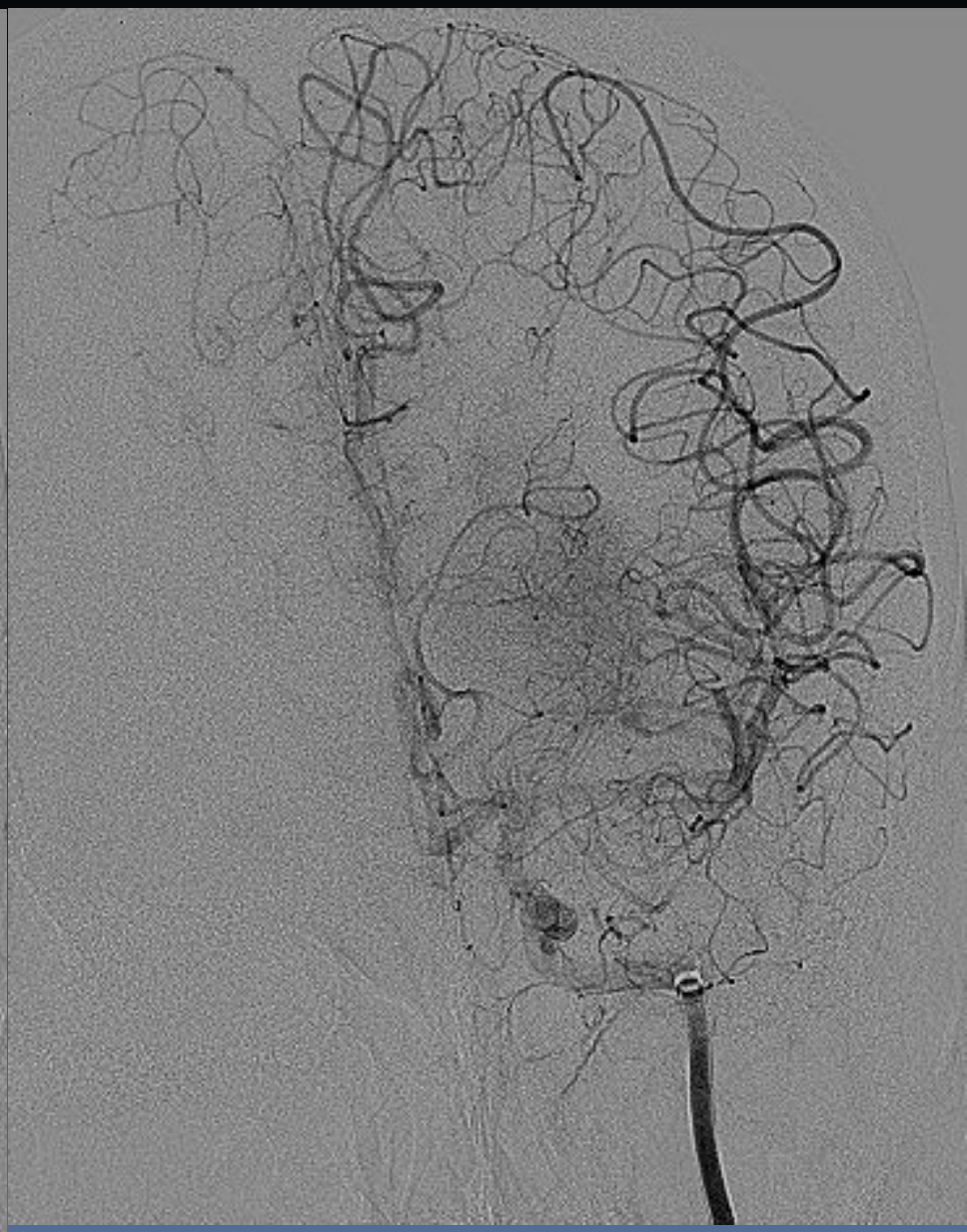
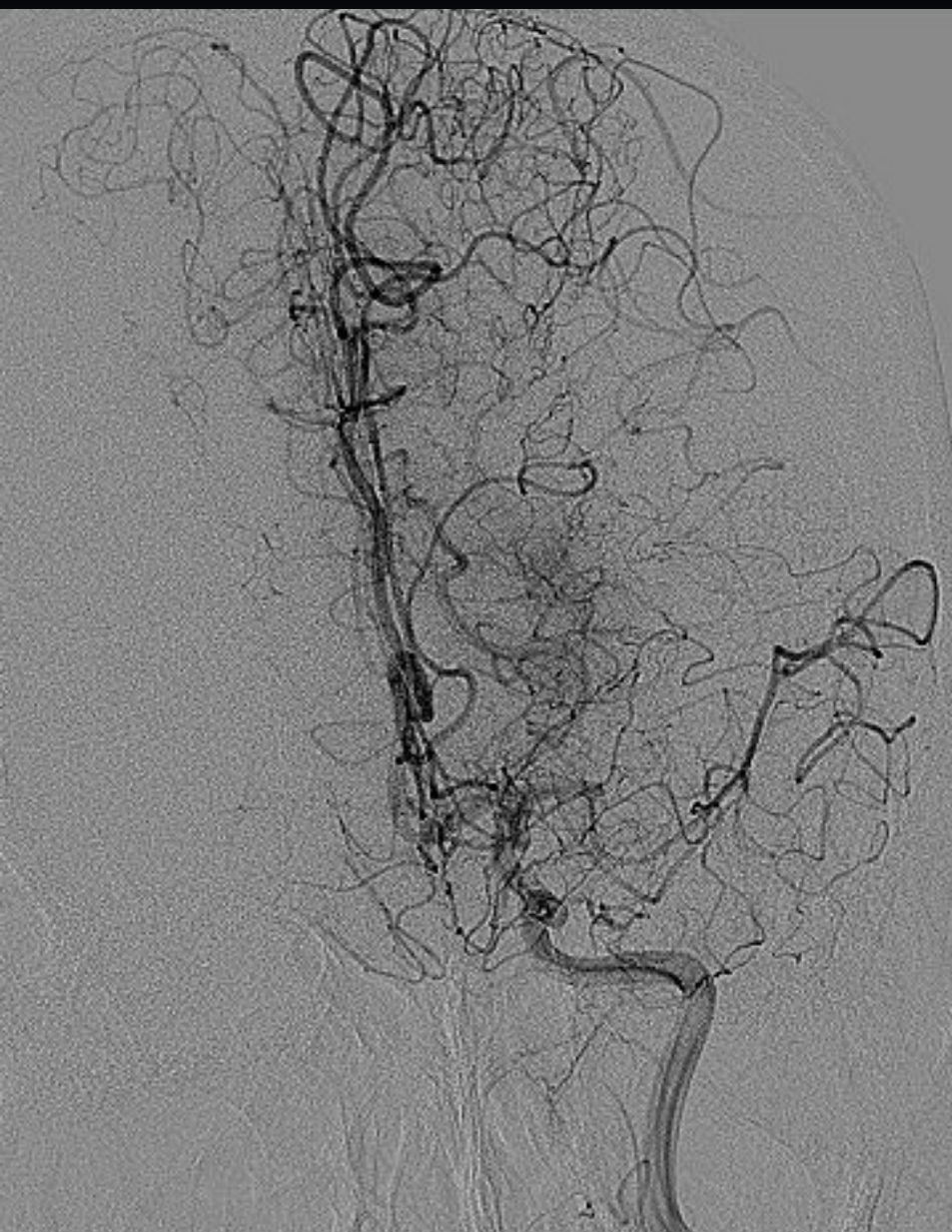


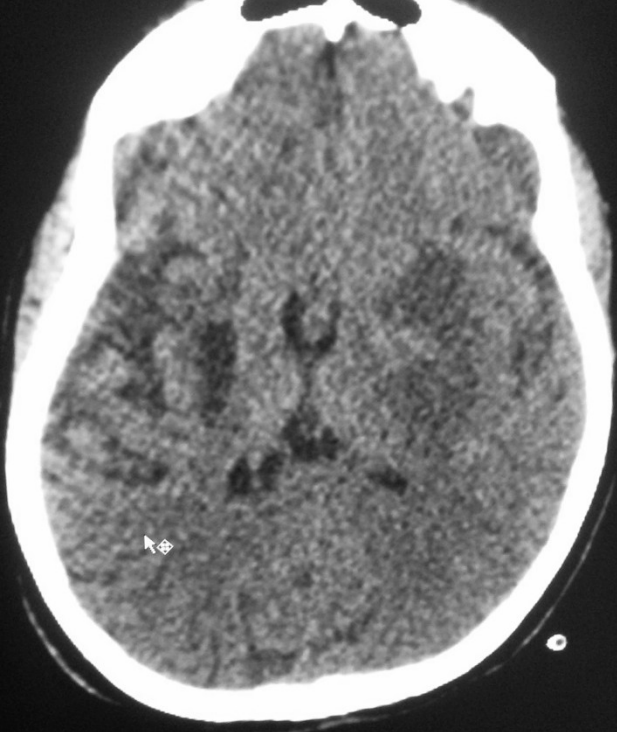




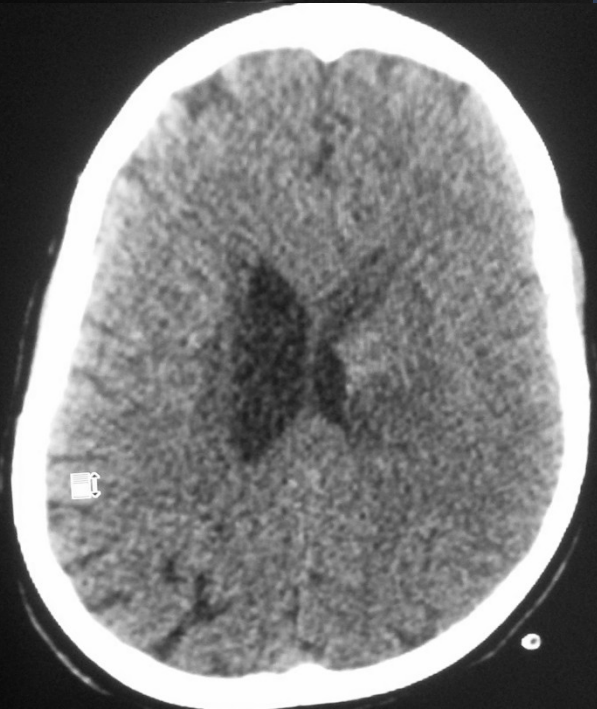










Post CT
Next Day



- 
- NIHSS- 10/12
 - Conscious , obeying verbal commands.
 - Power : UL- 1/5, LL-3/5
- 

**Targeted cancer
treatment (TACE)**

Acute Stroke

Aortic aneurysms

**Biliary Stenting
PTBD
TIPS**

Lower Limb Angioplasty

**Brain Aneurysms &
AVMS**

**We treat many conditions
Here are just a few**

**Dialysis
Access & AVF
Salvage**

Varicose veins

**Fibroids &
PPH**

Internal Bleeding

RFA Ablation

**Thrombolysis
Arterial & Venous**

**Vascular
malformations**

THANK YOU